



Double Cone Valve

Salient Features

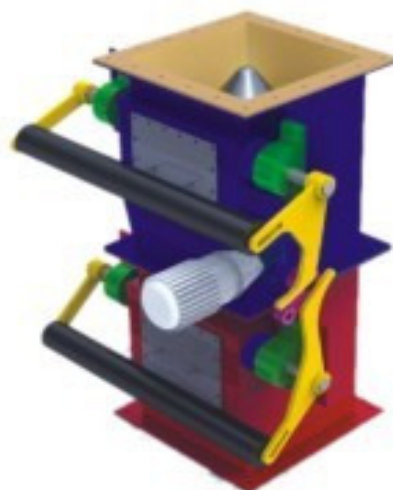
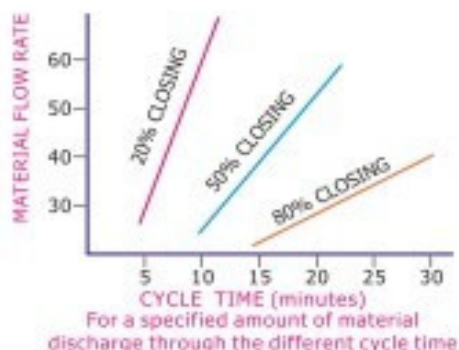
- ◆ Sizes available: SQ385, SQ485 and Sq585 larger sizes available upon request.
- ◆ Materials of construction: mild steel, cast aluminum, stainless steel
- ◆ Actuation : manual, motorized, pneumatic
- ◆ Round and square inlet and outlets available
- ◆ Robust design for continual operation
- ◆ Special Features like 100% sealing at high temperature sinter handling.

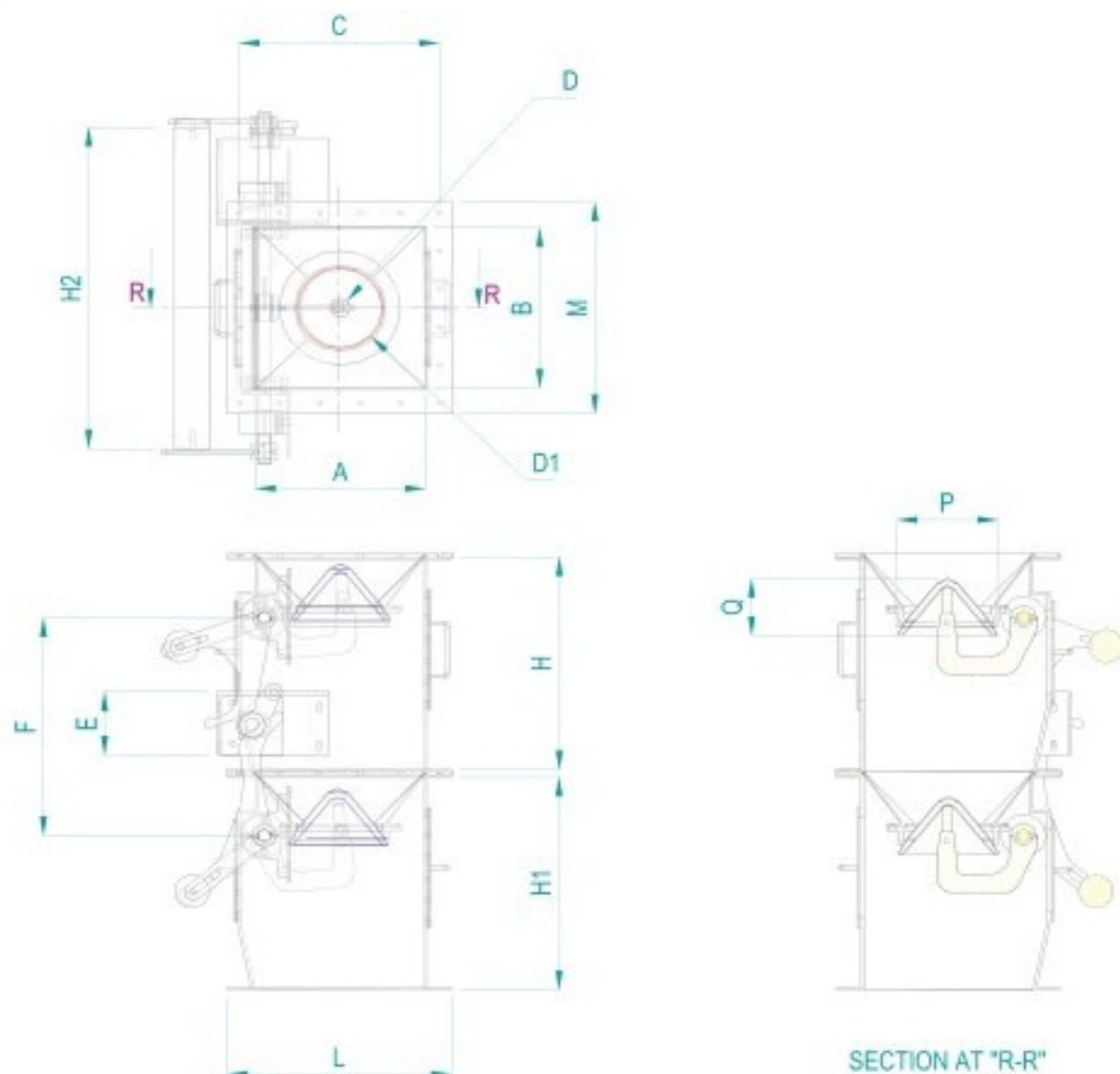
Function

As the dust collects in the hopper, the weight of the dust pushes down on the counter weight of the top flap and dust discharges down word. The top flap closes and the bottom flap opens to allow material to fall out and be removed. These can be motorized or pneumatically actuated.

UNICON provides three types of double cone valves as mechanically operated valves, electrically operated valves and pneumatically operated valves. In the case of mechanically operated double cone valves the counter weight / springs gives the force for the movement of the flap. In the case of pneumatically operated double cone valves, pneumatically operated piston gives the force for the movement of the flaps.

UNICON double cone valves are designed specifically for long life in handling. The wide selection of available actuators and control component allow easy integration with any degree of automation. A choice of mild steel 400 hardox,500 hardox & stainless steel materials gives the option of selection material of construction to suit your particular needs. Double cone valves are very durable.





TYPE	A	B	C	D	D1	E	F	H	H1	H2	L	M	P	Q
385x385	385	385	455	Ø48	Ø195	150	524	512	512	772	508	508	228	137
485x485	485	485	572	Ø59	Ø245	190	659	643	643	972	640	640	288	173
585x585	585	585	670	72	295	228	795	775	775	1170	770	770	348	208

Note : Dimensions and other details given in this catalogue are subject to change without notice, due to continuous product improvement.